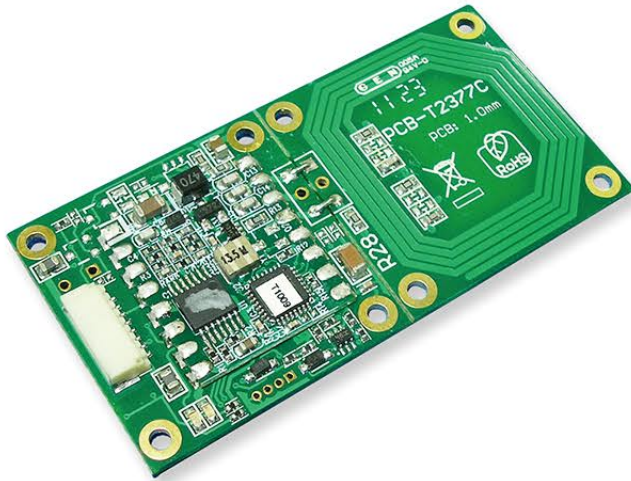


Embedded High Frequency RFID Module

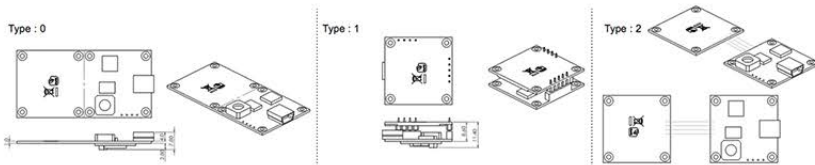
RF320 is a 13.56MHz RFID module to read UID of ISO 14443 cards, designed to be embedded into Security Controllers and Auto-ID Data Collectors. With the compact size, 3 types of antenna and lower power consumption, it's suitable to integrate with portable devices particularly.

The low cost, high performance module allows existing installation or applications to upgrade seamlessly, keeping most of their hardware architecture.



Features:

- Supports ISO 14443A
- Ultra compact size
- Featuring low power consumption
- Available with 3 types of antenna mounting
Type 0, Type 1 and Type 2



Applications:

- Data collection
- Portable Devices
- Access Control

Specifications:

Frequency	13.56MHz
Power requirement	5VDC
Card type	ISO 14443A Mifare 1K, 4K, Ultralight, Ultralight C, DESFire EV1 EV2
R/W type	UID only
Interface	Serial (UART), RS232, USB HID
Dimension	Type 0: 60(L) x 30(W) x 7.8(H) mm Type 1: 30(L) x 30 (W) x 11.4(H) mm Type 2: 30(L) x 30 (W) x 7.8(H) mm
Operation temperature	0 ~ 60 degree C
Humidity	10~90%

*Specification is subject to change without notice.

Order information:

- RF320L: TTL interface
- RF320R: RS232 interface
- RF320U: USB (Virtual COM) interface
- RF320H: USB HID interface

Optional accessory for the 1st test:

- WAS-T0624: USB cable
- WAS-T0625: RS232 cable

GIGA-TMS INC.

8F, NO. 31, LANE 169, KANG-NING STREET,
HSI-CHIH DIST, NEW TAIPEI CITY, TAIWAN
Tel: 886-2-26954214 Fax: 886-2-26954213

<http://www.gigatms.com.tw/>

Email: promag@gigatms.com.tw

promag@ms24.hinet.net