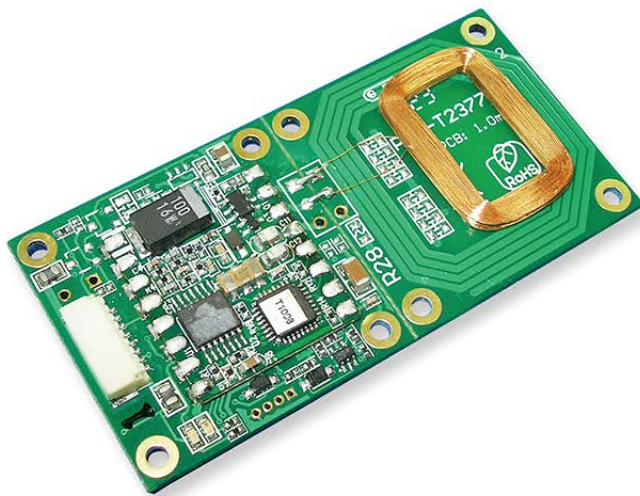


## Embedded Low Frequency RFID Module

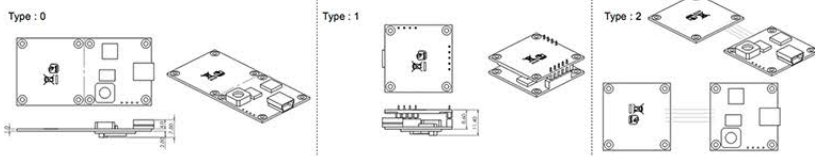
RF310 is a 125KHz/134.2KHz RFID module, designed to be embedded into Security Controllers and Auto-ID Data Collectors. With the compact size, 3 types of antenna and lower power consumption, it's suitable to integrate with portable devices particularly.

The low cost, high performance module allows existing installation or applications to upgrade seamlessly, keeping most of their hardware architecture.



### Features:

- 125KHz or 134.2KHz
- Ultra compact size
- Featuring low power consumption
- Available with 3 types of antenna mounting  
Type 0, Type 1 and Type 2



### Applications:

- Data collection
- Portable Devices
- Access Control

### Specifications:

|                       |  |
|-----------------------|--|
| Frequency             | 125KHz or 134.2KHz   |
| Power requirement     | 5VDC   |
| Card type             | EM 64 bits ASK or ISO 11784/11785 FDX-B  |
| R/W type              | UID only   |
| Interface             | Serial (UART), RS232, USB HID & Keyboard, MSR ABA TK2, Wiegand   |
| Dimension             | Type 0: 60(L) x 30(W) x 7.8(H) mm<br>Type 1: 30(L) x 30 (W) x 11.4(H) mm<br>Type 2: 30(L) x 30 (W) x 7.8(H) mm |
| Operation temperature | 0 ~ 60 degree C  |
| Humidity              | 10~90%   |

\* Specification is subject to change without notice.

### Order information:

- RF310L: TTL interface
- RF310R: RS232 interface
- RF310U: USB (Virtual COM) interface
- RF310H: USB HID interface

### Optional accessory for the 1<sup>st</sup> test:

- WAS-T0624: USB cable
- WAS-T0625: RS232 cable

### GIGA-TMS INC.

8F, NO. 31, LANE 169, KANG-NING STREET,  
HSI-CHIH DIST, NEW TAIPEI CITY, TAIWAN  
Tel: 886-2-26954214 Fax: 886-2-26954213  
<http://www.gigatms.com.tw/>  
Email: [promag@gigatms.com.tw](mailto:promag@gigatms.com.tw)  
[promag@ms24.hinet.net](mailto:promag@ms24.hinet.net)